



Wrights Road, London, E3

BUTLER & STAG





**Three storey Victorian former school house, presented in excellent condition throughout and offering three double bedrooms and three bathrooms/shower rooms, whilst just a short stroll from Victoria Park.**



- Three Storey Victorian Freehold
- Three Double Bedrooms
- Beautifully Presented Throughout
- Short Stroll to Victoria Park
- Three Bathrooms
- Former School House
- Available 30th November
- Furnished

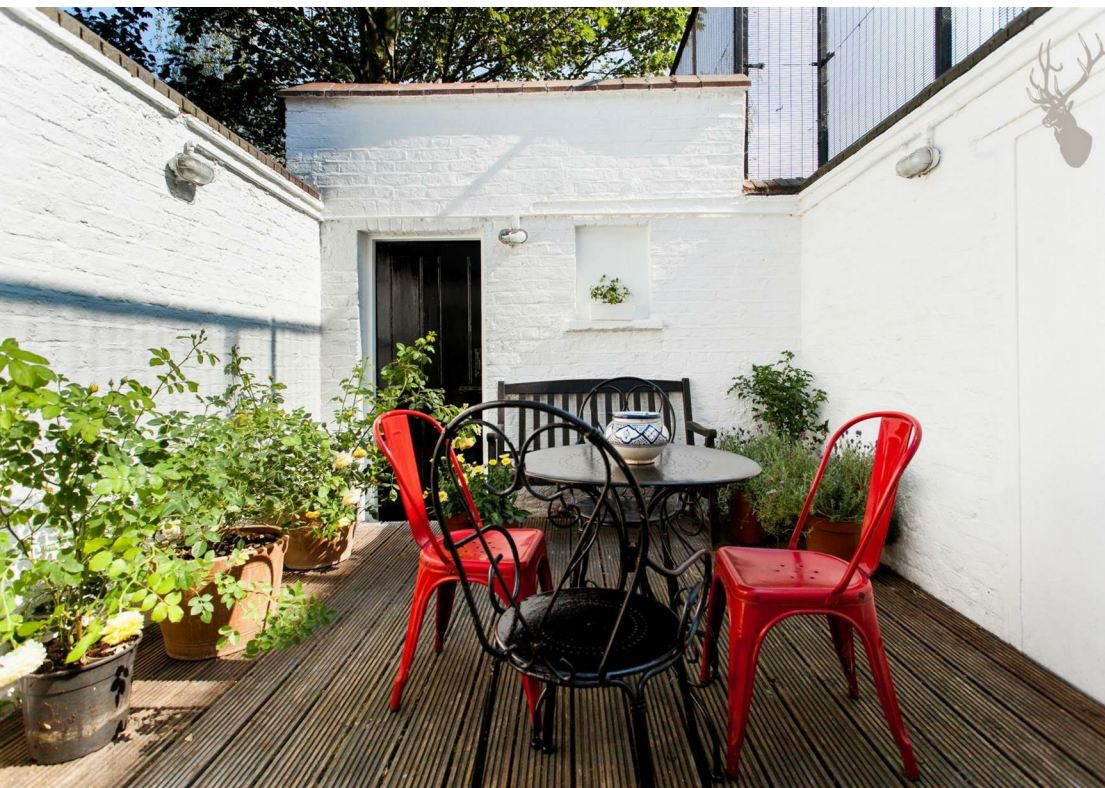
Available from 30th of November is this three bedroom, three storey Victorian former detached school house located a short stroll from Victoria Park and Roman Road Market.

The property comprises of three bathrooms/shower room, three double bedrooms, a large kitchen dining room and a light and spacious living area, complimented further by a terrace to the rear for those summer evenings.

Located close to all the local amenities and great transport links into the city and central London it is the most desirable property in the most desirable area.





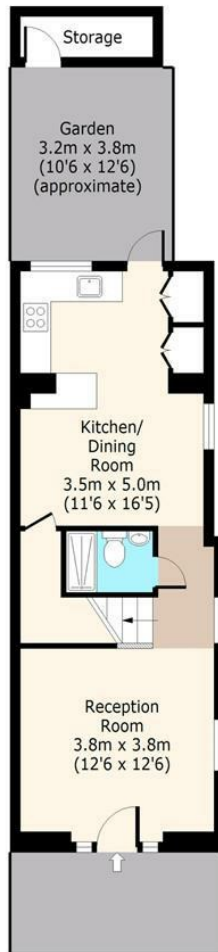




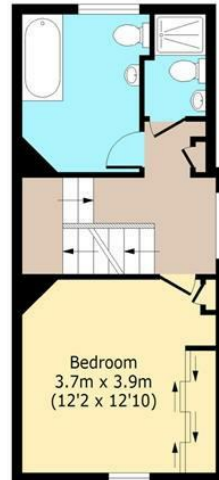
## Wrights Road, E3



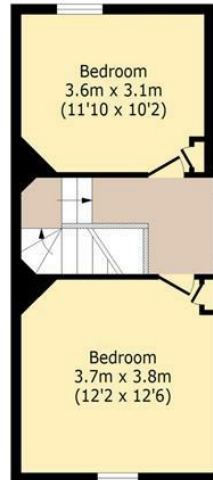
**Ground Floor**  
Approx. 41 Sq. meters (441 Sq. feet)



**First Floor**  
Approx. 34 Sq. meters (366 Sq. feet)



**Second Floor**  
Approx. 34 Sq. meters (366 Sq. feet)



Total area: approx. 109 Sq. meters (1173 Sq. feet)  
For illustration purposes only - not to scale  
[www.londonpropertyassessments.co.uk](http://www.londonpropertyassessments.co.uk)

IMPORTANT NOTICE - These particulars have been prepared in good faith and they are not intended to constitute part of an offer or contract. We have not performed a structural survey on this property and the services, appliances and specific fittings have not been tested. All photographs, measurements, floor plans and distances referred to are given as a guide and should not be relied upon.

# BUTLER & STAG

☎ 020 8102 1236

🏠 508 Roman Road, Bow, London, E3 5LU

✉ [bow@butlerandstag.com](mailto:bow@butlerandstag.com)

[www.butlerandstag.uk](http://www.butlerandstag.uk)